

Tubing Head Spool

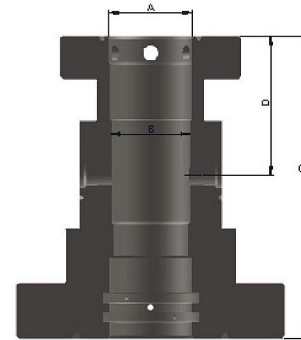
Tubing head is used to hang the tubing and seal the area between the tubing and casing. Our tubing heads are straight-bore with 45° landing shoulder design which avoids damage to sealing areas by drilling tools, and prevents wedging of the tubing hangers, bowl protectors and test plugs. So it can accept all TC series tubing hangers, and can be converted from single completion to multiple completion.

Outlets

- ◆ Line Pipe Outlets
- ◆ Studded Side Outlets

Bottom Connections

- ◆ PE/BG
- ◆ HPE



Tubing Head Spool

Bottom Flange size	Working pressure	Top Flange Size	Working Pressure	Outlet	A	B	C	D	Approx. Wt.	
in	psi	in	psi		in				lb	kg
7 1/16	3,000	11	2000	2 LP"	21	9 3/4	6 7/16	7	550	250
7 1/16	3,000	11	3000	2 LP"	21	10 1/2	6 7/16	7	575	262
7 1/16	3,000	11	3000	2 1/16 Std"	21	9 3/4	6 7/16	7	600	273
7 1/16	3,000	13 5/8	3000	2 1/16 Std"	23 1/4	11 3/4	6 7/16	7	750	341
7 1/16	5,000	9	3000	2 1/16 Std"	21 1/4	11 1/2	6 7/16	7	575	262
7 1/16	5,000	11	3000	2 1/16 Std"	22 1/8	11 1/2	6 7/16	7	600	273
7 1/16	5,000	11	5000	2 1/16 Std"	25 1/8	11 3/4	6 7/16	7	850	387
7 1/16	5,000	13 5/8	3000	2 1/16 Std"	23 1/4	11 3/4	6 7/16	7	850	387
7 1/16	10,000	11	5000	1 13/16 Std"	25 1/8	11 7/8	6 3/8	7	1200	546
7 1/16	10,000	11	5000	2 1/16 Std"	25 1/8	11 7/8	6 3/8	7	1200	546
7 1/16	10,000	11	10000	1 13/16 Std"	25	11 1/2	6 3/8	7	1450	660
7 1/16	10,000	11	10000	2 1/16 Std"	25	11 1/2	6 3/8	7	1450	660
11	3,000	13 5/8	3000	2 1/16 Std"	22 1/4	11 1/2	10	10 7/8	850	387
11	5,000	11	3000	2 1/16 Std"	25 3/8	14	8	10 7/8	1280	582
11	5,000	11	5000	2 1/16 Std"	26 3/8	13 3/8	8	10 7/8	1300	591
11	5,000	13 5/8	5000	2 1/16 Std"	27 3/8	13 3/4	10	10 7/8	1600	728
11	10,000	11	5000	1 13/16 Std"	27 5/8	14 1/2	8	10 7/8	2000	910
11	10,000	11	10000	2 1/16 Std"	31 3/8	15 1/2	8	10 7/8	2450	1114
11	10,000	13 5/8	5000	1 13/16 Std"	29 3/8	15	10	10 7/8	2200	1000
11	10,000	13 5/8	5000	2 1/16 Std"	29 3/8	15	10	10 7/8	2200	1000