



Product Range

- **Hammer Union**
- **Pipe Shoe**
- **Forge Fittings**



Hammer Union

We presents a comprehensive range of standard and sour gas Hammer Union. The Hammer union Subs and Nuts are Designed for low and high pressure applications and are Weco interchangeable.

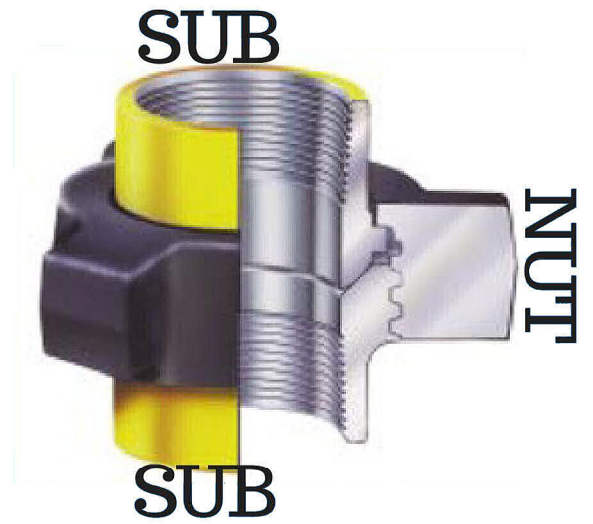


Material

Our unions are manufactured from steel forgings (A 105N & AISI 4130) using materials appropriate to specific pressure ratings.

Hammer Union Quick Reference Chart

Fig. No.	Assembly Colour Code for Standard Service	Pressure Rating (PSI)				Nominal Pipe Sizes																
		Standard Service		Sour Gas Service		(in.)	1/2	1	1-1/4	1-1/2	2	2-1/2	3	4	5	6	8	10	12			
		Cold Working	Test	Cold Working	Test	(mm)	13	25	32	38	50	65	80	100	125	150	200	250	300			
50		500	750	N/A	N/A																	
100		1,000	1,500	N/A	N/A																	
101		1,000	1,500	N/A	N/A																	
200		2,000	3,000	2,000	3,000																	
201		2,000	3,000	2,000	3,000																	
206		2,000	3,000	2,000	3,000																	
207		2,000	3,000	2,000	3,000																	
211		2,000	3,000	N/A	N/A																	
300		3,000	4,500	N/A	N/A																	
400		4,000	6,000	4,000	6,000																	
602		6,000	9,000	6,000	9,000																	
1002		10,000	15,000	7,500	11,250																	
1003		10,000	15,000	7,500	11,250																	
1004		10,000	15,000	7,500	11,250																	
1502		15,000	22,500	10,000	15,000																	
2002		20,000	30,000	N/A	N/A																	
2202		N/A	N/A	15,000	22,500																	
6666		6,000	9,000	N/A	N/A																	

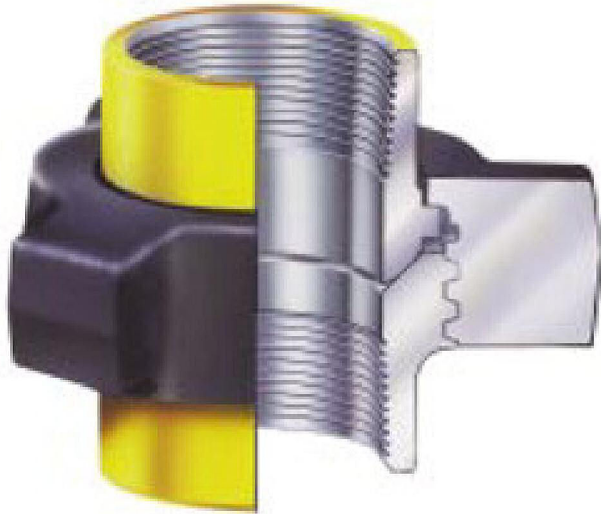


* Indicates reduced Cold Working Pressure due to other design factor - Reduction as show below.

- 5", 6", 12" Figure 400, Cold Working Pressure 2,500 PSI & Test Pressure 4,000 PSI.
- 5", 6", Figure 1002 Butt weld, Cold Working Pressure 7,500 PSI & Test Pressure 11,250 PSI Std. Service
- 4", 5", Figure 1003 Butt weld, Cold Working Pressure 7,500 PSI & Test Pressure 11,250 PSI Std. Service.
- 5", 6" Figure 1002 Butt weld, Cold Working Pressure 5,000 PSI & Test Pressure 7,500 PSI Sour Service.
- 4" 5" Figure 1003 Butt weld, 5,000 PSI & Test Pressure 7,500 PSI Sour Service.
- 6" Figure 1003 Butt weld, Cold Working Pressure 7,500 PSI & Test Pressure 11,250 PSI.

Note : For other sizes and types, please contact our sales office.

Product Description



SIZE: 1,2,3,4,6,8,10,12.

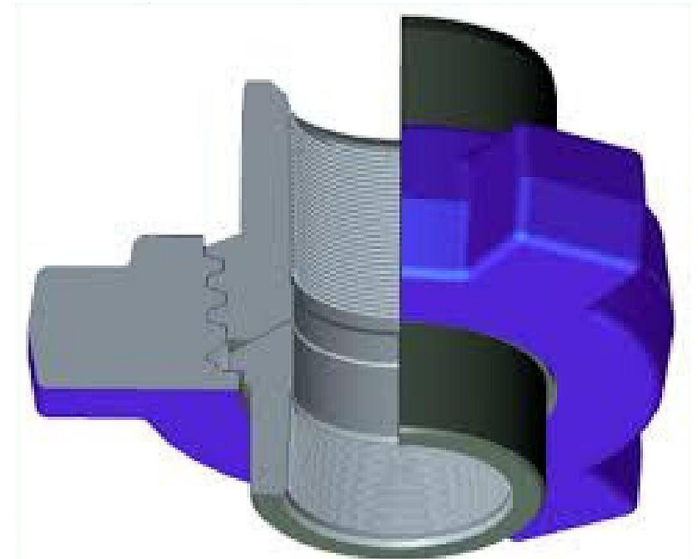
**Pressure Rating: : 1,000 PSI CWP – 1,500
PSI Test**

Figure: 100 (Threaded)

SIZE: 1,2,3,4,6,8,10,12

2,000 PSI CWP – 3,000 PSI TEST.

SCH: 40,80,160,XXH



**Figure: 200
(Threaded and Butt Weld)**



SIZE: 1, 2, 3, 4
2,000 PSI CWP – 3,000 PSI TEST
SCH: 40, 80,160, XXH.

Figure:206
(Threaded and Butt weld)

SIZE: 1, 2, 3, 4, 6, 8, 10, 12
6,000 PSI CWP – 9,000 PSI TEST
SCH: 40, 80, 160, XXH

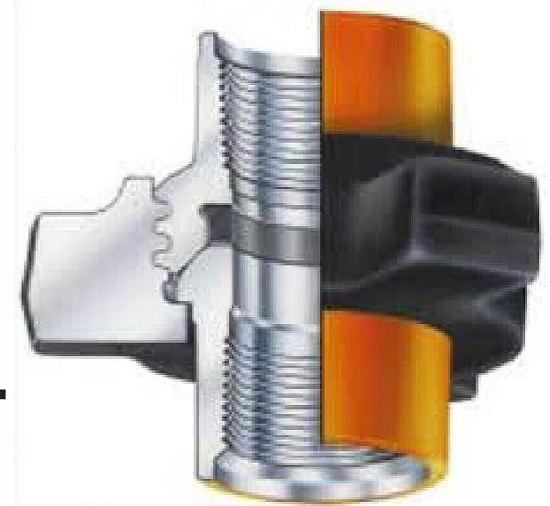
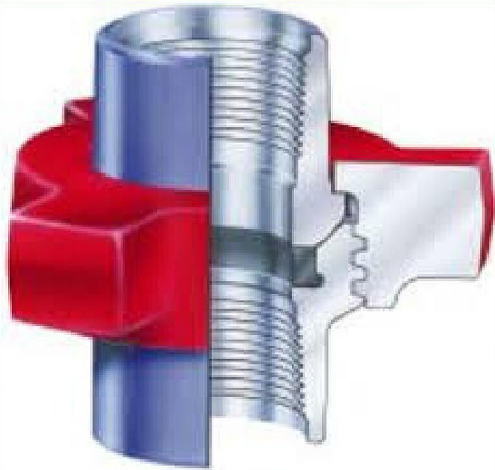


Figure: 602
(Threaded and Butt Weld)



SIZE: 1,2,3,4,6,8,10,12
10,000 PSI CWP – 15,000 PSI TEST
SCH: 40, 80, 160, XXH

Figure: 1002
(Threaded and Butt Weld)

SIZE: 1, 2, 3, 4, 6, 8, 10, 12
15,000 PSI CWP – 22,500 PSI TEST
SCH: 40, 80, 160, XXH



Figure: 1502
(Threaded and Butt Weld)

Pipe Shoe

A pipe shoe or pipe support also known as pipe hanger is designed element that transfer the load from the pipe to the supporting structure. Pipe shoe used in high or low temperature applications may contain insulation materials. Our pipe shoe is the best example of quality and durability. we offer painted pipe shoe.



**Pipe Size : 2, 3, 4, 6 ,8
Material: Carbon Steel.**

Forge Fittings

We also offering Forge Fittings in different range.

The material which is used for forge fittings are of optimum quality that ensure notable features such as durability, strength and dimension-ally accurate. Our product range in Forge fittings are as follow:

**Elbow (90 & 45 degree),
Tee, cross, Cap, Coupling,
Half Coupling and Hex Plug
(Available in Threaded and Butt Weld)**



SIZE: 1/8" to 4"

Material: 105N

**Pressure rating in Threaded:
3000 / 6000.**

Butt weld: 3000 / 6000 / 9000