



# Oil Country Tubular Goods



# Tubing (API-5CT)

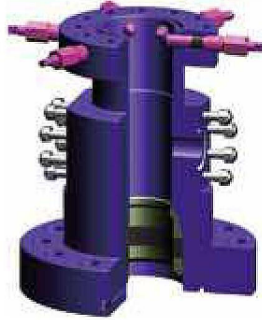


Outside Diameter	Wall Thickness	Weight Non-Upset T&C	Weight External Upset T&C	Grade and Upset Type*				
				J55	L80	N80	C90	P110
in.	in.	lb/ft	lb/ft					
2-3/8	0.167	4.00	-	PN	PN	PN	PN	-
	0.190	4.60	4.70	PNU	PNU	PNU	PNU	PNU
	0.254	5.80	5.95	-	PNU	PNU	PNU	PNU
	0.336	7.35	7.45	PU	-	PU	PU	-
2-7/8	0.217	6.40	6.50	PNU	PNU	PNU	PNU	PNU
	0.276	7.80	7.90	-	PNU	PNU	PNU	PNU
	0.308	8.60	8.70	-	PNU	PNU	PNU	PNU
	0.340	9.35	9.45	-	PU	-	PU	-
	0.440	11.50	-	N	PN	-	PN	-
3-1/2	0.216	7.70	-	PN	PN	PN	PN	-
	0.254	9.20	9.30	PNU	PNU	PNU	PNU	PNU
	0.289	10.20	-	PN	PN	PN	PN	-
	0.375	12.70	12.95	-	PNU	PNU	PNU	PNU
4	0.226	9.50	-	PN	PN	PN	PN	-
	0.262	-	11.00	PU	PU	PU	PU	-
4-1/2	0.271	12.60	12.75	PNU	PNU	PNU	PNU	-

\* Premium connections are available on request. P - plain end, N - non-upset, U - external upset.

# Tubing Heads & Spools TCM

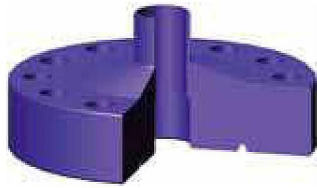
TCM Tubing Heads & Spool use a straight-bore bowl design for single and multiple completions in working pressures through 15,000 psi and in sizes to meet all multiple-completion requirements Bottom preparation can include PE seal or X-bushing secondary seals. HPE seals for high-performance frac wells are available upon request.



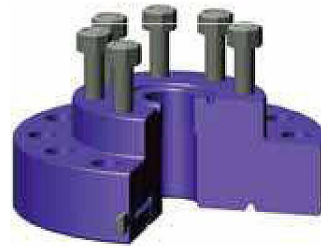
## TCM Tubing Head Specifications (API-6A)

Top Flange Size (inches)	Working Pressure (psi)	Bottom Flange Size (inches)	Working Pressure (psi)
7-1/16"	3,000	11"	2,000
7-1/16"	3,000	11"	3,000
7-1/16"	3,000	13-5/8"	2,000
7-1/16"	3,000	13-5/8"	3,000
7-1/16"	5,000	11"	3,000
7-1/16"	5,000	11"	5,000
7-1/16"	5,000	13-5/8"	3,000
7-1/16"	10,000	11"	5,000
7-1/16"	10,000	11"	10,000
7-1/16"	15,000	11"	10,000
9"	3,000	11"	3,000
9"	3,000	13-5/8"	2,000
9"	3,000	13-5/8"	3,000
9"	5,000	11"	3,000
9"	5,000	13-5/8"	3,000
9"	10,000	11"	5,000
9"	10,000	11"	10,000
11"	10,000	13-5/8"	5,000

# Tubing Head Adapters



B1 Tubing Head Adapter



B2P Tubing Head Adapter

## B1 Tubing Head Adapter

Flange Size (inches)	Working Pressure (psi)	Threaded Top	Bottom Thread
7-1/16	2,000	2-3/8" UP TBG	2-3/8" UP TBG
7-1/16	2,000	2-7/8" UP TBG	2-7/8" UP TBG
7-1/16	2,000	3-1/2" UP TBG	3-1/2" UP TBG
7-1/16	3,000	2-3/8" UP TBG	2-3/8" UP TBG
7-1/16	3,000	2-7/8" UP TBG	2-7/8" UP TBG
7-1/16	3,000	3-1/2" UP TBG	3-1/2" UP TBG
7-1/16	5,000	2-3/8" UP TBG	2-3/8" UP TBG
7-1/16	5,000	2-7/8" UP TBG	2-7/8" UP TBG
7-1/16	5,000	3-1/2" UP TBG	3-1/2" UP TBG

## B2P Tubing Head Adapter

Flange Size (inches)	Working Pressure (psi)	Studded Top	Bottom Thread
7-1/16	2,000	2-1/16" 2,000 psi	2-3/8" UP TBG
7-1/16	3,000	2-1/16" 5,000 psi	2-3/8" UP TBG
7-1/16	3,000	2-9/16" 5,000 psi	2-7/8" UP TBG
7-1/16	3,000	3-1/8" 5,000 psi	3-1/2" UP TBG
7-1/16	5,000	2-1/16" 5,000 psi	2-3/8" UP TBG
7-1/16	5,000	2-9/16" 5,000 psi	2-7/8" UP TBG
7-1/16	5,000	3-1/8" 5,000 psi	3-1/2" UP TBG