

ASME Code fabricator and machine shop, is a wholly owned subsidiary designs and fabricates different kinds of pressure vessels per ASME Sec. VIII, Div. I, welded steel tanks per API codes, bellmouth reducers, pig launchers and receivers, instrument supports, conical strainers, duct/transition pieces, spectacle and line blinds, orifice plates/flanges and dampers and louvers.

 ASME CODE PRESSURE VESSELS/TANKS

---



 PIG LAUNCHERS AND RECEIVERS

---

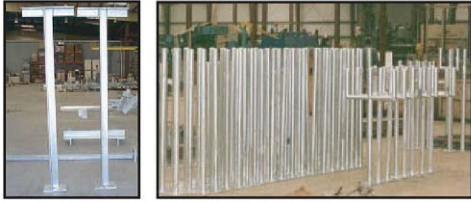


 BELLMOUTH REDUCERS

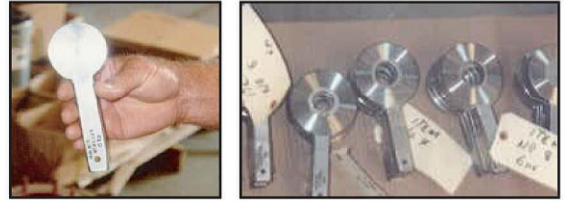
---



Instrument Supports



Orifice Plates



Duct and Transition Pieces



Conical Strainers



Dampers and Louvers



Spectacle Blinds



# VESSELS & TANKS



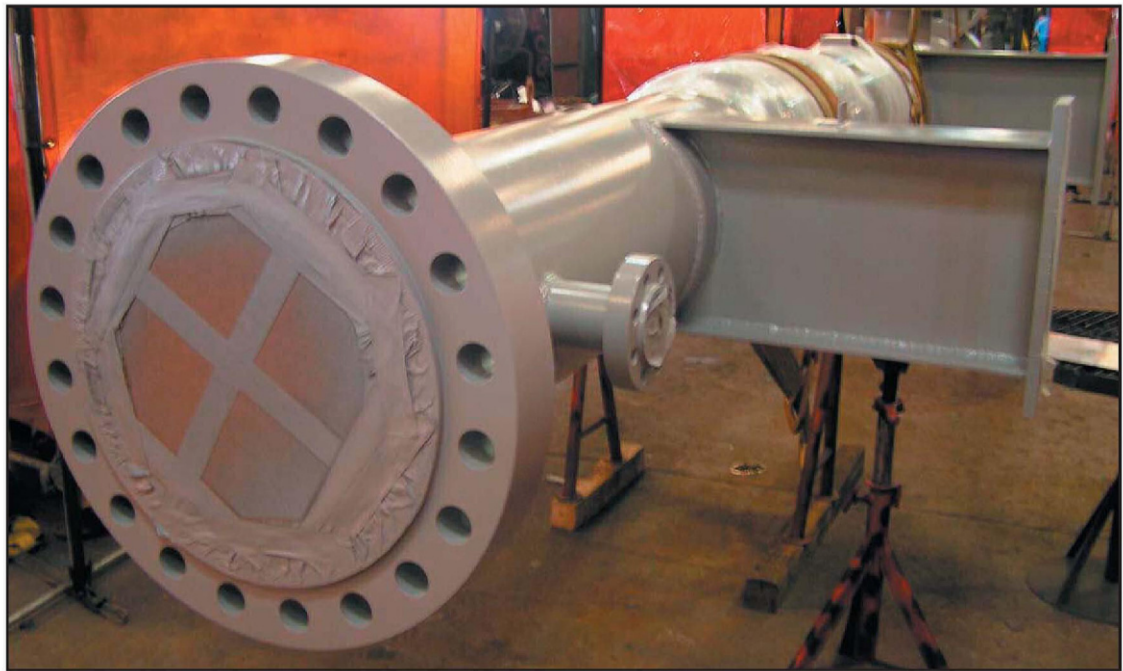
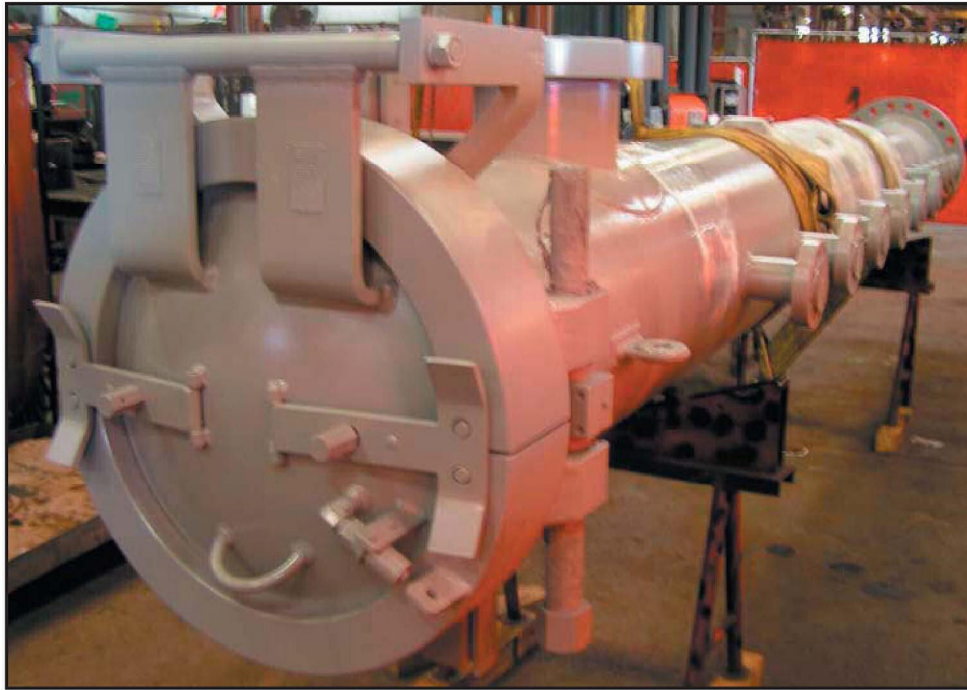
manufactured a pig launcher and receiver for an exploration oil company and were shipped to the company's plant in Nigeria. They are used to launch a cleaning pig throughout the piping system to clean the pipeline. Each was hydro tested to assure quality and performance. The pig launcher was painted with mutiple coats for environment protection. Both units were specifically designed per customer's request to withstand certain pressure and temperatures.



**Pig Receiver in preparation for Hydro Testing**



**Pig Launcher ready for shipment.**



**Pig Launcher: 20" x 24"**

<b>Materials:</b>	Carbon Steel API 5L x 60
<b>Dimensions:</b>	Length = 272"
<b>Weight:</b>	5,873 lbs
<b>Pressure:</b>	1,700 PSIG
<b>Temperature:</b>	Minimum = -28°F
	Maximum = 200°F



**Pig Launcher: 18" x 24"**

<b>Materials:</b>	Carbon Steel API 5L x 60
<b>Dimensions:</b>	Length = 335"
<b>Weight:</b>	12,716 lbs
<b>Pressure:</b>	3,258 PSIG
<b>Temperature:</b>	Minimum = -58°F Maximum = 200°F



Hydro testing was performed on both the pig launcher and receiver. Each unit is filled with water and then the pressure is steadily increased until it reaches the specified pressure. With such high pressure testing, a flow meter tracked the pressure during the four hours of testing.

Pressure Gauges →



← Flow Meter tracking pressure during hydro testing.





Hydro Testing of Pig Receiver →→

The pig receiver was also hydro tested to check for leaks at various pressures.



←← Pressure Gauges during testing

**CODE:** ASME Sect. VIII Div.1. , (Is Stamp required)  
 ASME B31.4 (Liquid transmission)  
 ASME B31.8 (Gas transmission)

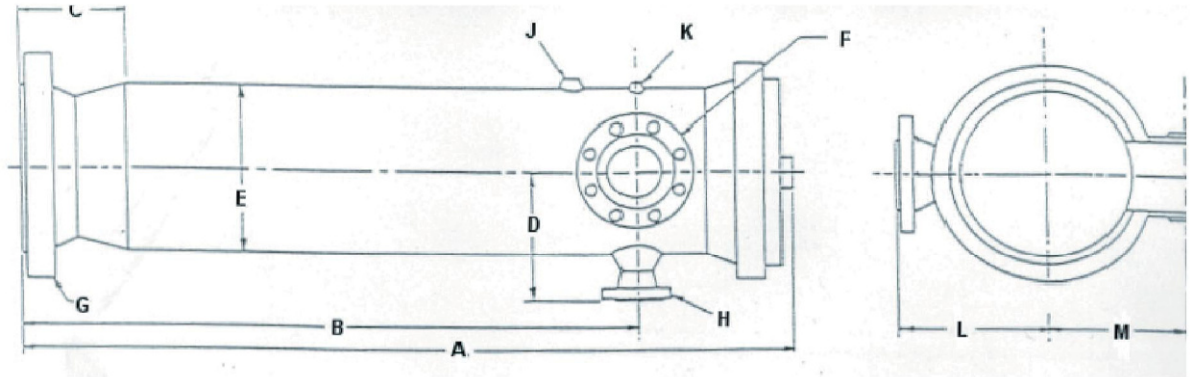
<b>DESIGN:</b>	PSIG	Operating PSIG/Temp.
	Temp	NACE Requirement
	Corrosion Allowance	Flange (ANSI Class)
	Design Factor (B31.8)	Line size & wall thickness & Grade of material

**PIG SIGNALER:** 1. Required yes/no  
 2. If required, type ( Mechanical, electrical)  
 (Mfg. Preference)

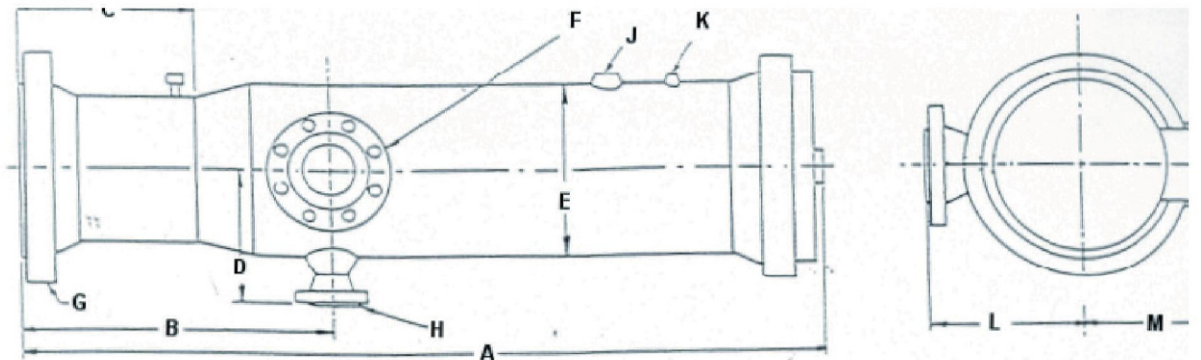
**END CLOSURE:** (Is there a Manufacture Preference)

- Length of pig to be used.
- Kicker or bypass size.
- Any other special requirements, such as paint (our standard is Red Oxide Primer), supports, etc.
- Customer provides a drawing or sketch (if possible).

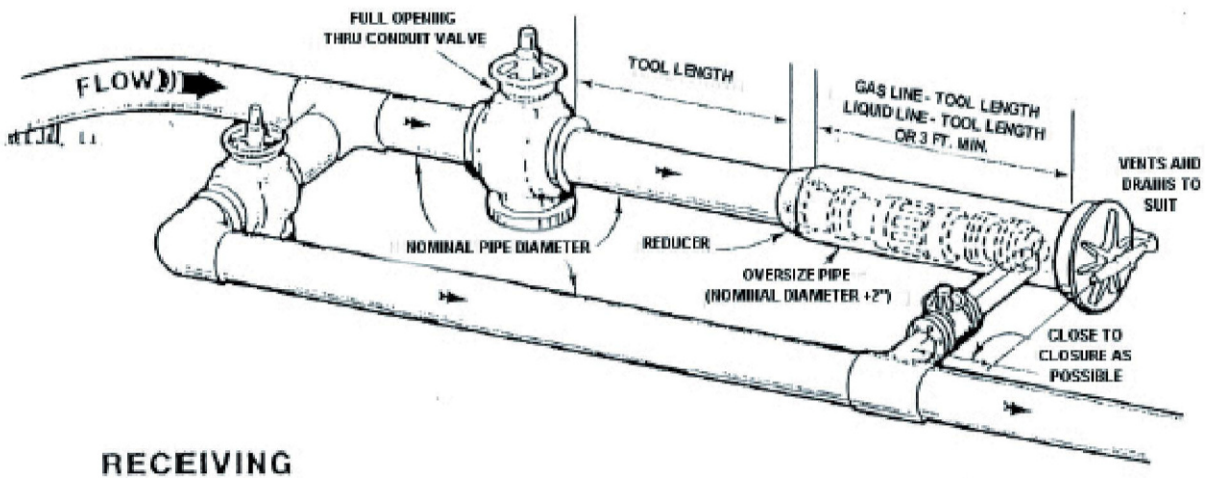
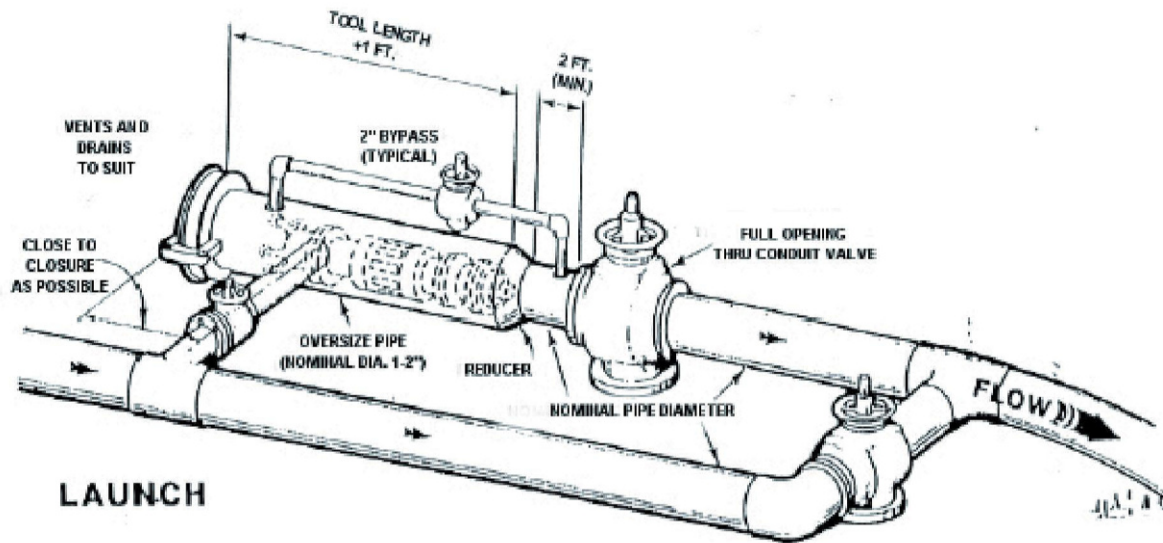
<b>DESIGN CODE</b>	ASME Section VIII, Div. 1 ANSI B31.4 (Liquid Pipelines) ANSI B31.8 (Gas Pipelines)
<b>PRESSURE RATING:</b>	ANSI Class 150 through 1500
<b>WELDING CODE:</b>	ASME IX
<b>WELDING INSPECTION:</b>	ASME Section V
<b>OUTLETS / INLETS:</b>	Bypass / Kicker Drain Vent Gauge
<b>CLOSURE:</b>	Tube Turn Huber Yale Modco GD
<b>BODY MATERIAL:</b>	Pipe: A-106, API 5L, API High Yield Plate: A-516 Gr. 70
<b>FORGINGS:</b>	A-105 / A-350-LF2
<b>FITTING:</b>	A-234-WPB / A-234-WPC
<b>HYDRO TEST:</b>	1.3 X MAWP for 4 hours (1 hour, ASME)
<b>SUPPORTS:</b>	Not Included (Optional)
<b>FINISH:</b>	Sandblasted and Primed



**Standard Pig Launcher**



**Standard Pig Receiver**





PT&P Ref #00286 9/20/02

### Designs and Manufactures Scraper Launchers and Receivers for an Oil and Gas Exploration and Production Company in Venezuela

The launchers and receivers are designed with a 6" line and 8" barrel at 60" long with a 4" kicker, 3/4 in. P.I., 2" vent and drain design per ASME B31.4. They are made to withstand 1480 PSIG at 100° F and can accommodate 15" pigs. They were painted inside and out per System 6E gray color and included simple skid, MTR, N.D.E., and flange protectors.

### Scraper Launchers And Receivers For Separation Project

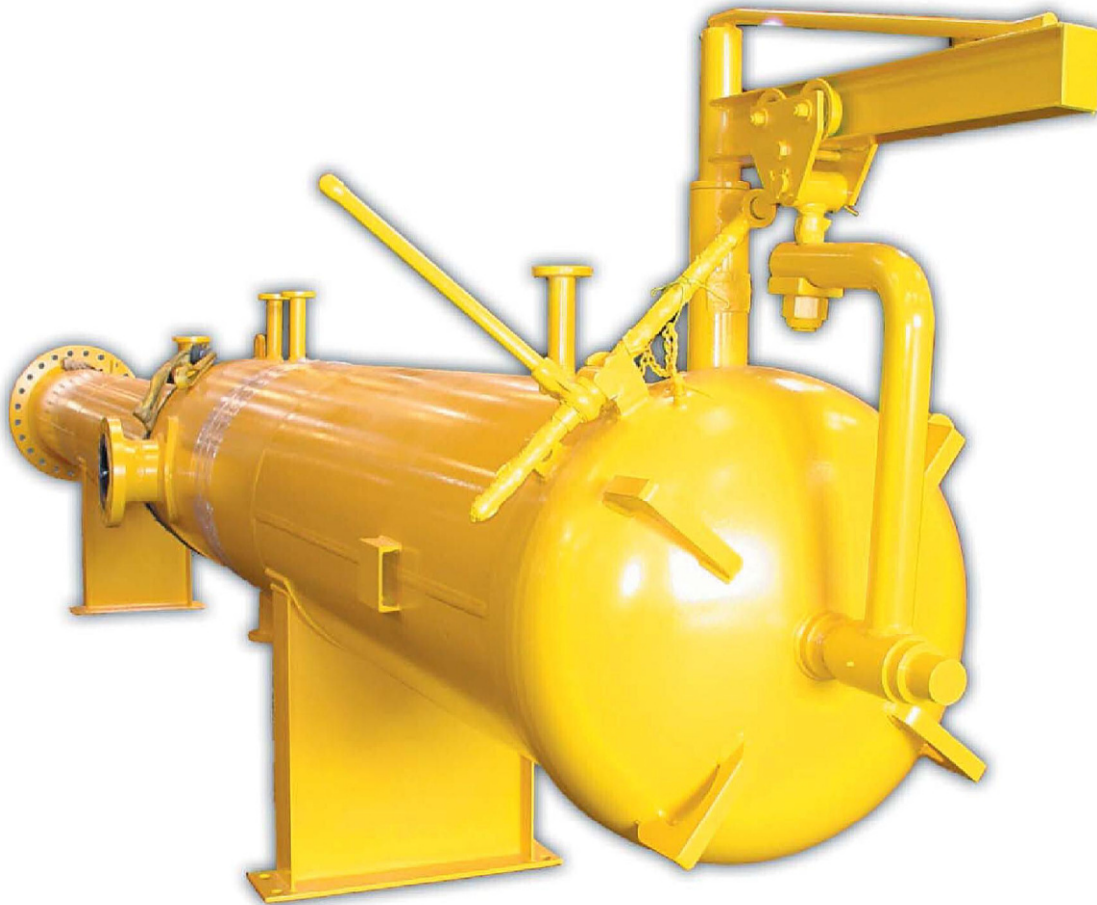
manufactured eight 8" and four 10" scraper launchers and receivers for a separation project off the West Coast of Africa. The products were immediately put to use for placement and removal of pigs. These launchers and receivers were designed with quick opening doors and R.T.J flanges at 2300 PSIG, built to ASME, Sect. VIII, Div. 1 and D.N.V. inspected.



PT&P 7/26/01

**Designs and Fabricates 24" x 30" diameter,  
740 PSIG Scraper Launchers and Receivers for a Plant in  
Mexico.**

The launchers and receivers, with dimensions of 24" x 30" x 138" long and 10" x 14" x 132" long, are designed for 740 PSIG at 170 degrees. One of the Scraper Launchers and Receivers composed of a 24" dia. minor barrel and a 30" dia. major barrel, while the other one consisted of a 10" dia. minor barrel and a 14" dia. major barrel. The major and minor barrels are fabricated from API 5L X 52. To ensure quality, the Launchers and Receivers were 100 % x-rayed and hydro-tested prior to shipment.



PT&P Ref # 00495 - 04/22/05

## Fabricates a 24" x 30" diameter, 1480 PSIG Scraper Receiver with Saddle Supports

recently fabricated a Scraper Receiver Class 600 with saddle supports for an industrial company in Texas. The scraper receiver is composed of a 24" dia. minor barrel and a 30" dia. major barrel with 1" thick walls. It is approximately 250" in length and weighs 8,200 lb. The major and minor barrels are fabricated from API-5LX42 material. All other items are fabricated from SA105, SA106B, and SA-36 as applicable. The receiver is designed per ASME B31.8 with a 0.72 Design Factor and NACE MP-01-75. The design pressure is 1480 PSIG at 125°F.



PT&P Ref #00435 - 06/04/04







**ASME Code  
Pressure Vessels/Tanks**



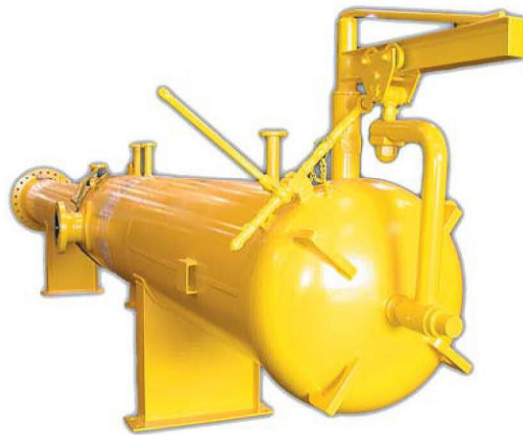
**Bellmouth Reducer**



**Instrument Stands**



**Orifice Plates**



**Sweegee Pigs  
Pig Launchers & Receivers**



**Spectacle & Line  
Blinds**



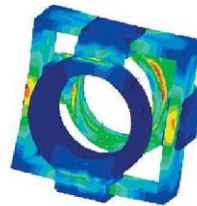
**Conical Strainers**



**Duct & Transition Pieces**



**Dampers / Louvers**



**Finite Element Analysis**